

BALOGH



# BIET/\* Single Channel EtherNet Interface

**RFID Interface**

**Industrial Product Range**



## Key For Tag Suffix

Suffix	Tag Series Description
<b>X</b>	OMX High Speed Industrial R/W Tag Series
<b>E</b>	GIE Industrial R/W Enhanced Speed Tag Series
<b>A</b>	OMA Industrial R/W Tag Series
<b>F</b>	OF Read-Only 7 Byte Industrial Tag Series
<b>L</b>	OLR Long Range 2 Byte Read-Only Industrial Tag
<b>P</b>	OP Light Industrial R/W Tag Series
<b>FC</b>	TAF High Speed R/W Light Industrial Tag Series
<b>IC</b>	TAI Light Industrial R/W Tag Series
<b>MC</b>	TAM High Speed R/W Tag Series

## Ordering Information

When assembling your part number, please include the corresponding tag suffix.

**Example:** BIET/X. - OMX High Speed Industrial R/W Tag Series. (Cables and Connectors Sold Separately)

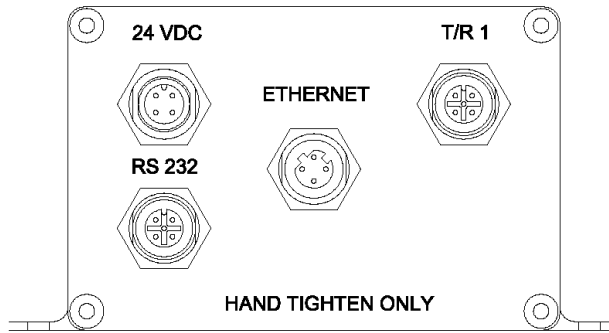
## Characteristics

The Balogh BIET meets the needs required for today's network flexibility. It communicates using EtherNet/IP<sup>®</sup> protocol and connects via Ethernet link at fixed 10/100 or auto-negotiate and has an IP-65 rated metallic enclosure and quick connect wiring, it provides field mounting, durability, and reduces wiring costs. The last (3) octets of the units IP address can be set with (3) rotary switches located behind the LED status cover and the IP address is displayed on an LED display and visible next to the status LED's.

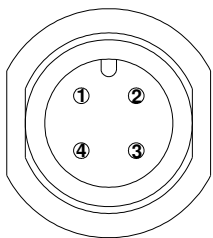
### Features:

- Automatic Self Test on Power up
- Status LED's for Power, Network, Module, TAG Presence, and Faults
- IP Address LED display
- Last 3 octets of IP address configurable via rotary switches
- IP 65 Rated Enclosure
- Configuration via RS-232 serial link, or HTML
- Dip switch selectable protocols

# Installation Information/Cable Pin Outs

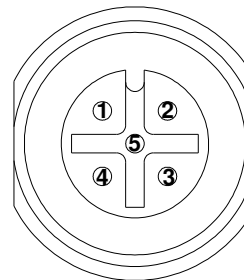


**COLOR CODE REFERS TO ONLY BALOGH CABLING**



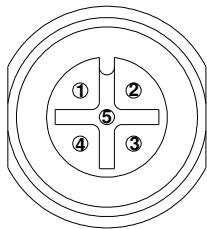
- 1 - +24VDC POWER (BROWN-V)
- 2 - NOT USED
- 3 - NOT USED
- 4 - 0VDC (BLACK-O)

**Power: 24 VDC**



- 1 - NOT USED
- 2 - RX
- 3 - TX
- 4 - SIGNAL GROUND
- 5 - NOT USED

**RS-232**



- 1 - +24VDC POWER (BROWN-V)
- 2 - INPUT (WHITE-S)
- 3 - OUTPUT (BLUE-E)
- 4 - 0VDC (BLACK-O)
- 5 - SHIELD

**Transceiver Channel 1**

## Cabling And Accessories (SOLD SEPERATELY)

Power Cable - SEF/ST/\*\*

Standard Cable Lengths are 2, 5m, 25, 50, 75, 100ft

Network Cable - BM12 RJ45/\*\* (LENGTHS ARE IN METERS)

Standard Cable Lengths are 1, 3, 5

Transceiver Cable – MF/EXT/\*\* (LENGTHS ARE IN METERS)

Standard Cable Lengths are 2, 5, 10

Configuration Cable - BIET FCB/\*\*

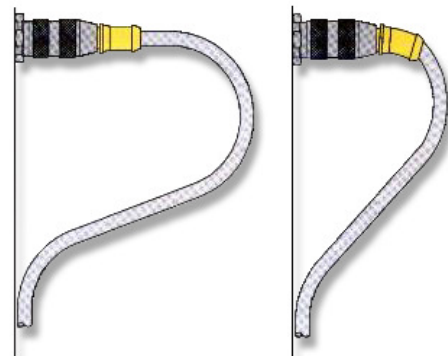
Standard Cable Length is 2m

\*\* Indicates Cable Length Please Contact Balogh for other cable lengths.

**Only Hand Tighten Cables**

**Correct**

**Incorrect**



**Bend radius 3 x cable diameter**

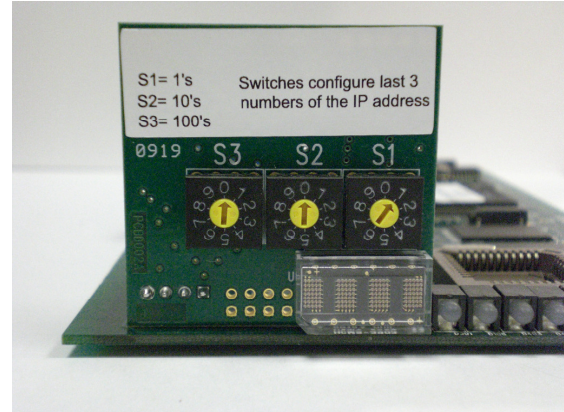
## Technical Information

- (1) Transceiver Channel
- (1) M12 EtherNet Connection
- Operating Temperature 0° to 55° C
- Requires Regulated 24 VDC (± 1%)
- Consumes 160 mA of power (without transceivers); 260 mA (with 1 transceiver)

See manual for power supply specifications.

Protocol	Dip Switch			
	1	2	3	4
EtherNet/IP®	OFF	ON	OFF	OFF
IP RESET	OFF	OFF	OFF	ON

Dip Switches Located Behind LED Cover and Display  
 3 Rotary switches can set last 3 octets of the IP address. If at zero for all 3 switches unit defaults to IP address configured on HTML page or Serial link.



## FAQ

**Q: What are the BIET's default settings from the manufacturer?**

A: The BIET's IP Address from the manufacturer is **192.168.0.1**, the Subnet Mask is **255.255.255.0**, and the Gateway Address is **0.0.0.0**. The BIET's communications by default are set to auto-negotiate through the **EtherNet IP®** Protocol. at **57600 KBaud**.

**Q: How do I access the BIET's HTML page?**

A: To obtain the BIET's HTML page, you'll need to open your web browser and type in the IP address of the BIET in the address bar.

**Q: What is the username and password when accessing the BIET through the HTML page?**

A: There isn't a username and the password is; **balogh**. (All Lowercase)

**Q: If the IP address of a BIET is unknown, how do I retrieve this information?**

A1: The LED display next to the status LEDs will scroll the current configured IP address for the unit.

**Q: How do I determine my firmware revision?**

A: Your firmware revision is displayed in the HTML page under the Current Parameters section.

**Q: If I change a setting in the HTML configuration page or within Hyper Terminal, when do the changes take place?**

A: Your changed setting DO NOT take place until you cycle power to the BIET.

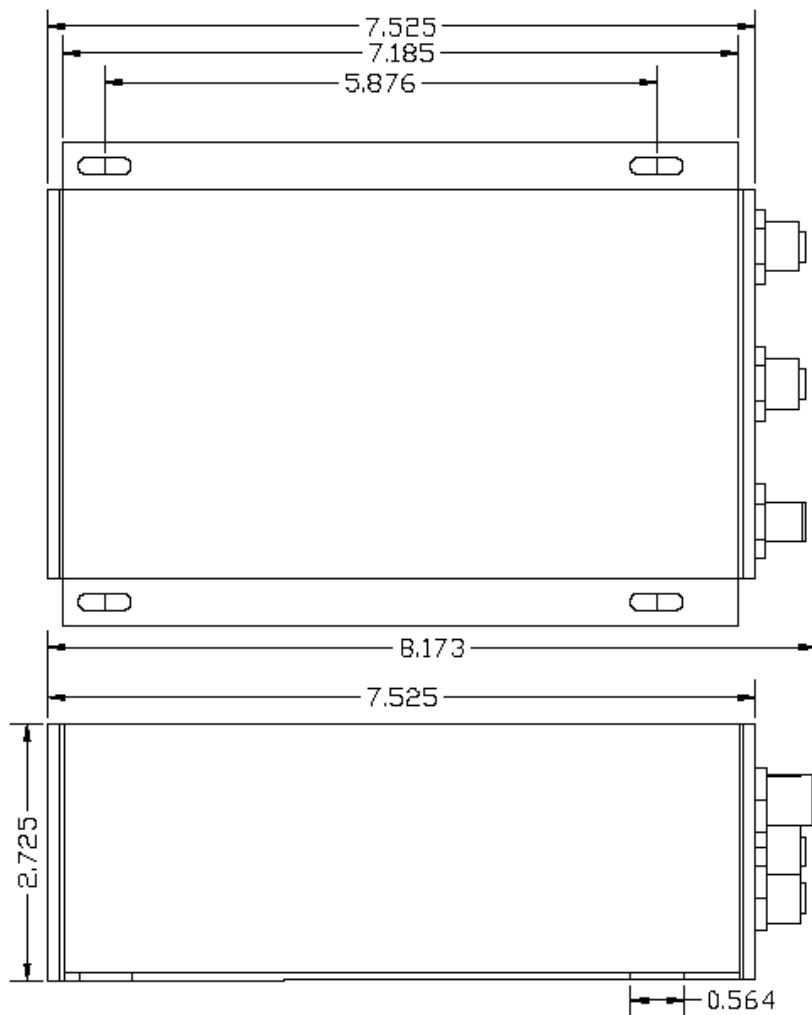
**Q: What is the maximum Ethernet cable length I can use?**

A: 100m

**Q: What is the maximum transceiver cable length I can use?**

A: The maximum length of cabling that can be used for a transceiver varies among transceiver type. Please refer to the appropriate transceiver datasheet for cable length specifications.

# Dimensional Drawing



**Housing for BIET (ETHERNet)**  
**Date: 10/13/09**  
**Scale: 1=1**

